
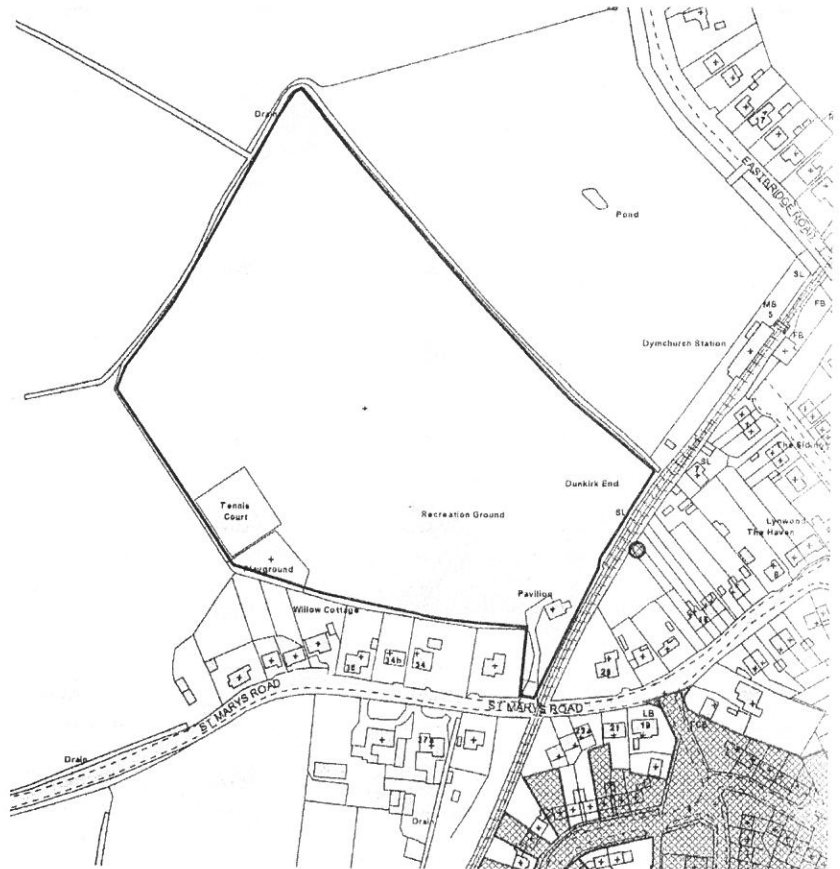
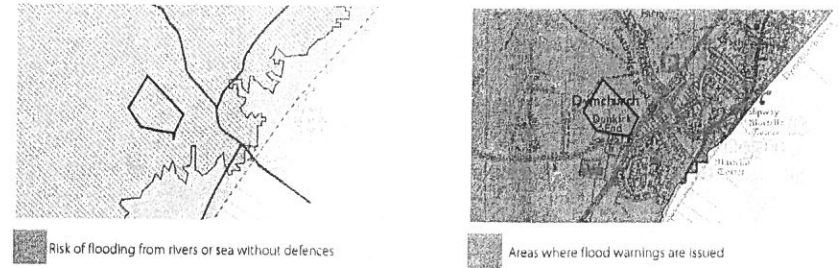


Red line indicates site application boundary 

The site is located off St Mary's Road, Dymchurch. It is adjacent to the Rorney, Hythe and Dymchurch Railway line and is currently used as a sports and recreational area. The proposed pavilion is to serve a number of existing clubs who currently use the facilities and encourage sport participation in the area.

The maps opposite show that the site does not fall within a conservation area or Area of Outstanding Natural Beauty, nor is it within an ancient woodland or have any tree preservation orders on site. It does however fall within an area at risk from flooding from rivers and the sea and is subject to flood warnings.



Site Analysis

## DESIGN APPROACH

The design has been carefully considered in line with both Sport England and ECB pavilion guidelines.

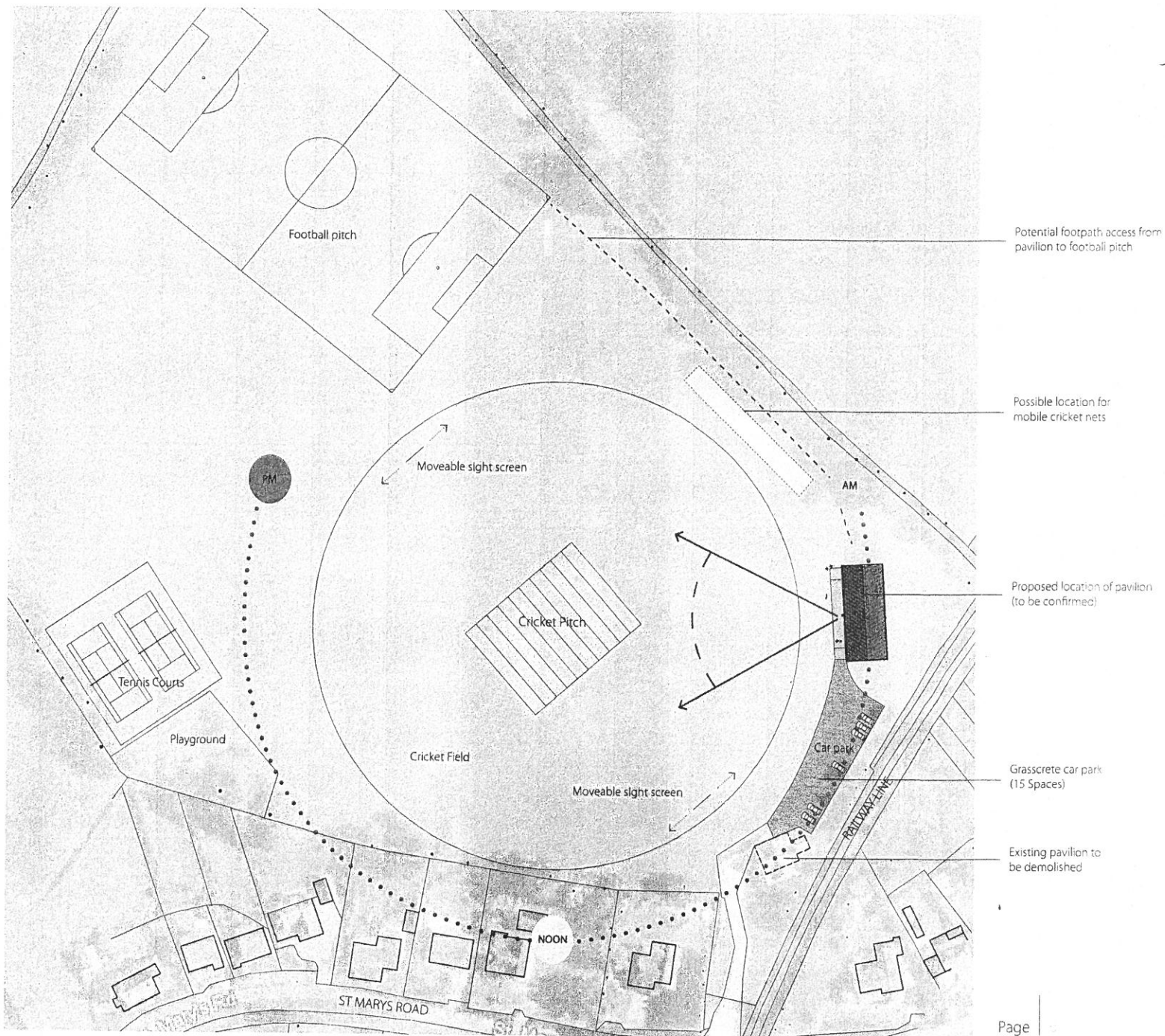
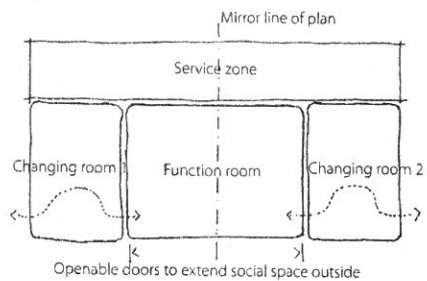
The proposal seeks to maximise the usable space and provide a cost effective and efficient pavilion which can comfortably accommodate the necessary sporting clubs and provide sufficient space for future expansion.

The siting of the pavilion has been largely determined by the direction of play from the cricket pitch and the consequent location of the sight screens. The corner site will offer the most dynamic views for spectators, giving full context of the field.

A grasscrete permeable paving system has been introduced to provide improved parking facilities within direct access of the proposed pavilion.

## EARLY CONCEPT DIAGRAM

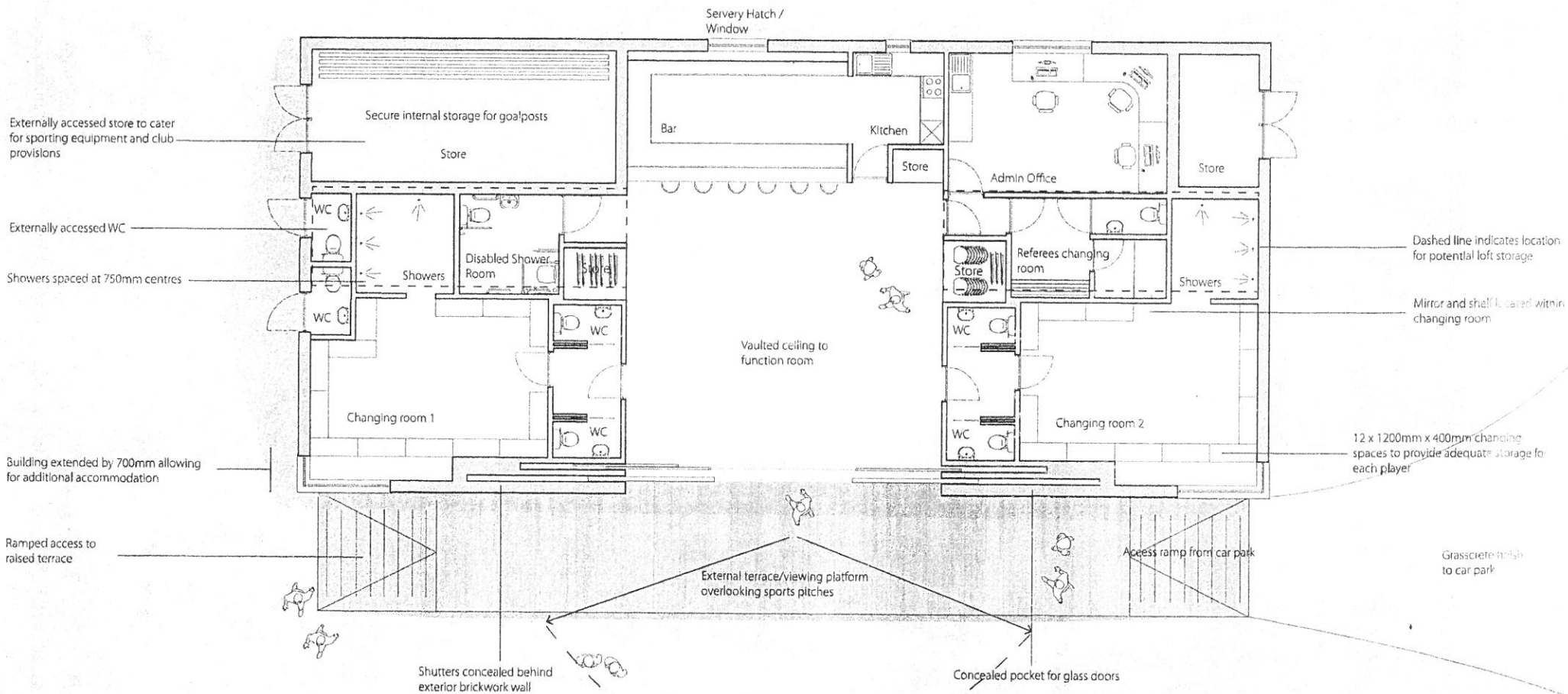
The diagram below highlights the key concepts of the proposal. It identifies a main service area to the rear containing showers, kitchen, toilets etc, and two changing rooms separated by a good size multiuse function room.

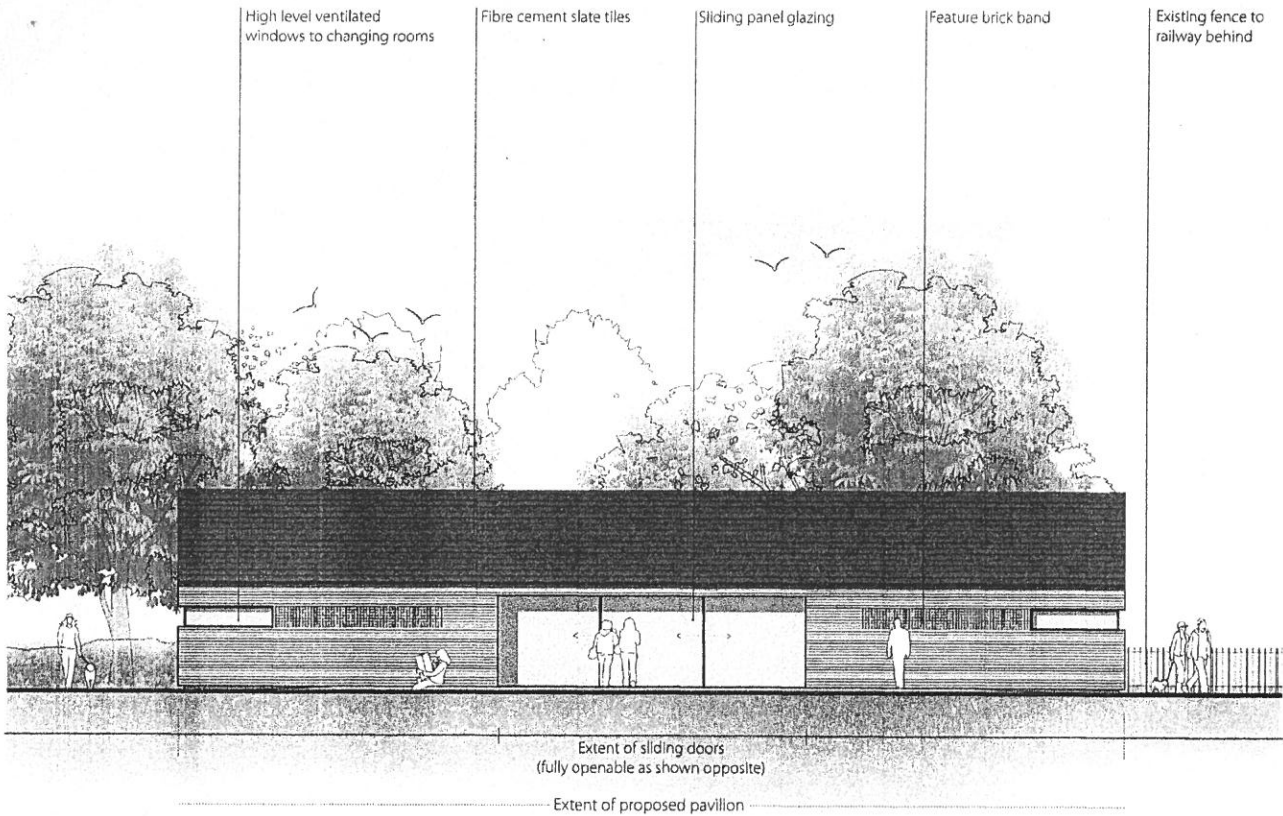


Proposed Site Plan (1:1000 @ A3)

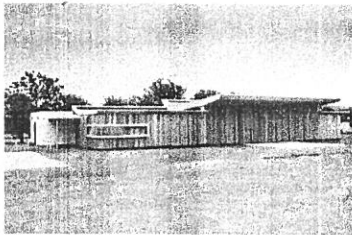
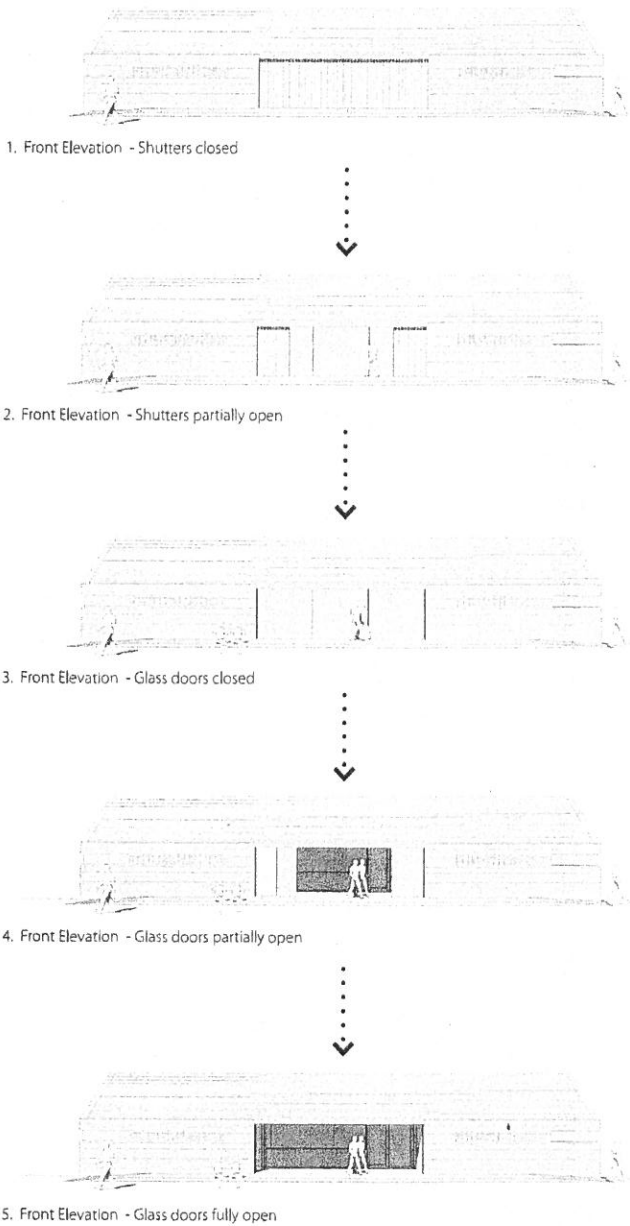
**SCHEDULE OF ACCOMMODATION**

Function Room	57 sqm	Changing Room 2	24 sqm	Small External Store	6.8 sqm
Bar	18.3 sqm	Changing Room 2 - Showers	5.5 sqm	Large External Store	25.5 sqm
Kitchen	6.2 sqm	Changing Room 2 - WC x2	1.5 sqm	Additional internal storage	5.9 sqm
Disabled Shower Room	6.2 sqm	Lobby/Corridor (within changing room 2)	3 sqm	Potential loft storage (above 1.5m head room in loft)	40 sqm
Changing Room 1	22.8 sqm	Referees Changing Room	5 sqm	<b>Gross Internal Floor Area</b>	<b>245 sqm (approx)</b>
Changing Room 1 - Showers	6.2 sqm	Referees Changing Room - Showers	2.6 sqm		
Changing Room 1 - WC x2	1.5 sqm	Referees Changing Room - WC	1.7 sqm		
Lobby/Corridor (within changing room 1)	3 sqm				





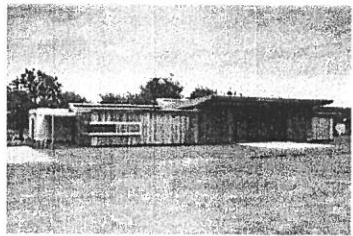
SEQUENCING DIAGRAM



Hawkinge Football Pavilion (Shutters Closed)  
Guy Hollaway Architects

To ensure sufficient security for the pavilion, the proposal includes provisions for sliding shutters which cover the large glass doors when the pavilion is not in use. The diagram opposite demonstrates this sequential process.

The example provided (Hawkinge Football Pavilion) shows how we have implemented this system recently in a sports pavilion.



Hawkinge Football Pavilion (Shutters Open)  
Guy Hollaway Architects

Proposed Front Elevation